

Bundanoon Dancefest 2011

Contra Dance

Tune Book

Index

- Page 2 – Set 1 Les Raquetteurs / Gallope et Chaine Cottillion
Page 3 – Set 2 Wild one / JigJazz
Page 4 – Set 3 Chorus Jig / Hommage á Edmond Parizeau
Page 5 – Set 4 Celina / Fleur de Mandragore
Page 6 – Set 5 Anchor steam Reel / Flying on home to Shelley
Page 7 – Set 6 Reel des Esquimaux / Reel De Mattawa
Page 8/9 – Set 7 Pays de Haut / Reel Saint–Antoine / Reel Saint–Joseph
Page 10 – Set 8 Seanamhac Tube Station, The / Sunnyside, The
Page 11 – Set 9 Rainy day in Montegue / Oak Leaf Reel
Page 12/13–Set 10 Beaumont Rag / Stones Rag
Page 14 – Set 11 La Bastringue / L’Oiseau Bleu
Page 9 – Set 12 Far Away waltz

Copyright of all tunes rests with composer in all cases.
Where possible composers of tunes are given.

1. Les Raquetteurs

Trad.

Musical score for 'Les Raquetteurs' in B-flat major, 2/4 time. The score consists of four staves of music. The first staff is marked 'ptA' and contains the first two measures of the first phrase. The second staff continues the first phrase. The third staff is marked 'ptB' and contains the first two measures of the second phrase. The fourth staff continues the second phrase and ends with a triplet of eighth notes. Chord symbols are placed above the notes: Bb, F, Bb, Eb, Bb, Gm, Cm, F, Bb, F, Bb, Gm, F, Gm, D, Gm.

1. Gallope et Chaine Cottillon

Trad.

Musical score for 'Gallope et Chaine Cottillon' in C major, 2/4 time. The score consists of four staves of music. The first staff is marked 'ptA' and contains the first two measures of the first phrase. The second staff continues the first phrase. The third staff is marked 'ptB' and contains the first two measures of the second phrase. The fourth staff continues the second phrase. Chord symbols are placed above the notes: Am, F, Am, C, Em7, Am, F, Am, C, Am, C, G, G7, F, C, C, G, G7, C.

pg. 3, Bundanoon Dancefest 2011, Contra Tune Book

2. The Wild One

Mer Pantaleoni Boel

Dm F B \flat Am Dm F B \flat C Am Dm

Dm Am Dm Dm C Am Dm

2. JigJazz

Brendan Power
arr. Rob Mahony from Airdance (R. Miller et al)

ptA

D G A A7

D G G6 |¹ Bm7 |² Bm7

ptB

F \sharp m6 G6 Em G

|¹ F \sharp m7 A7 Em G |² Bm7 F \sharp m A7 G A7

ptA

D G A A7

D G G6 |¹ Bm7 |² Bm7

ptC

D D/C Bm7 A7

G6 F \sharp m7 |¹ Bm7 Em A7 |² A7 G A7

3. Chorus Jig

trad.

Chorus Jig musical score in G major (one sharp). The score is divided into two parts, A and B, each with two variations (ptA1, ptA2 and ptB1, ptB2). The music is in 6/8 time and features a mix of eighth and sixteenth notes. Chords are indicated above the notes: D, A, A7, G, C, and D. The piece concludes with a double bar line and repeat dots.

3. Hommage á Edmond Parizeau

Marcel Messervier

Hommage á Edmond Parizeau musical score in G major (one sharp). The score is in 4/4 time and features a mix of eighth and sixteenth notes. Chords are indicated above the notes: E7, A, D, D7, and A7. The piece includes first and second endings, marked with '1' and '2' in boxes. The music concludes with a double bar line and repeat dots.

4. Celina

Musical score for 'Celina' in G major, 4/4 time. The score consists of four staves of music. The first two staves use chords G and D. The last two staves use chords Em, D, Am, and G. The melody is a simple, rhythmic tune.

4. Fleur de Mandragore

Michel Bordeleau

Musical score for 'Fleur de Mandragore' in A major, 4/4 time. The score consists of four staves of music. The first two staves use chords A, F#m/C#, D, E, and E. The last two staves use chords A, Bm, D, E, and E7 (A). The melody is a simple, rhythmic tune. There are two first endings marked '1' and '2' above the second staff.

5. Anchor steam Reel

Brian McNeill

ptA D F#m Bm A G D/F# Em A7/D

D F#m Bm A G D/F# A7/E D

ptB D A G A

D A G D A D

5. Flying on home to Shelley

Paul Gittitz

ptA G6 Am7 Bm7 C6 D

G6 Am7 Bm7 ¹ D9 D | ² D9 D

ptB G6 Am7 C6 Bm7 Am7 D7

Em7 Am7 C6 Am7 ¹ D7 G6 | ² D7 G

6. Reel des Esquimaux

Eskimo Reel

Quebec

Musical score for 'Reel des Esquimaux' (Eskimo Reel) in G major, 2/4 time. The score consists of four staves of music. The first staff begins with a treble clef, a key signature of one sharp (F#), and a common time signature (C). The melody is written in eighth and sixteenth notes, with a triplet of eighth notes in the first measure. Chords are indicated above the staff: G, C, D7, G, G, E7/G#, Am, D7. The second staff continues the melody with chords G, C, D7, G, G, Am7, D7, G. The third staff starts with a repeat sign and has chords G, C, G, E7/G#, Am, D7. The fourth staff concludes the piece with chords G, C, G, Am7, D7, G.

6. Reel De Mattawa

Musical score for 'Reel De Mattawa' in G major, 2/4 time. The score consists of four staves of music. The first staff begins with a treble clef, a key signature of one sharp (F#), and a common time signature (C). The melody is written in eighth and sixteenth notes. Chords are indicated above the staff: Em, D. The second staff continues the melody with chords Em, D, Em. The third staff starts with a repeat sign and has chords Em, D, Em, A. The fourth staff concludes the piece with chords Em, D, Em, D, Em.

7. Pays de Haut

$\text{♩} = 115$

A D A D

D A D

B D G A D

D G A D

7. Reel Saint-Antoine

$\text{♩} = 115$

ptA A E

A E A

ptB A D Bm F#m A7

A D D A E A

7. Reel Saint-Joseph

♩ = 115

ptA

D A D G A

D A D G A D

ptB

D G Em A

Bm G Em A A D

12. Far Away

Waltz
©1986 Peter Jung

Bm F#m Bm A

G F#m Bm A ¹ Bm ² G

D A D Em

Bm A G F#m Bm F#m Bm

8. The Seanamhac Tube Station

John Carty

♩. = 120

ptA

Gm C Dm Dm F C F

Gm C Dm Dm F ¹ C ² C

ptB

B♭ F B♭ F C F B♭ F B♭ F C

A7

B♭ F B♭ F C F Gm B♭ Dm C

8. The Sunnyside

Niall Vallely

♩. = 120

ptA

G C D7 G C D G

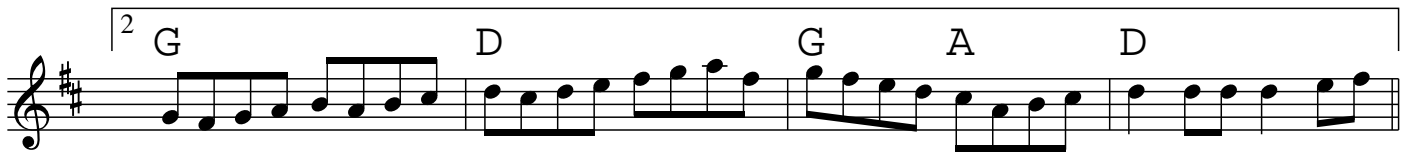
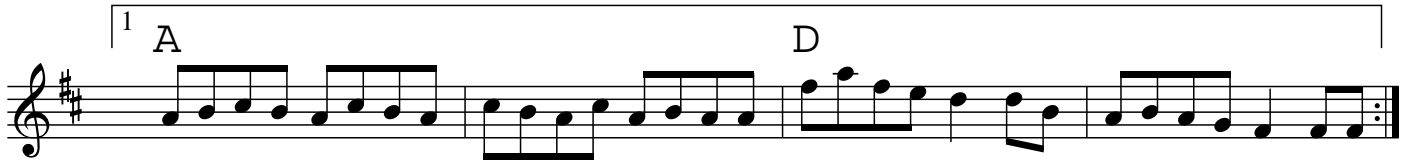
ptB

G C D7 G C D D G

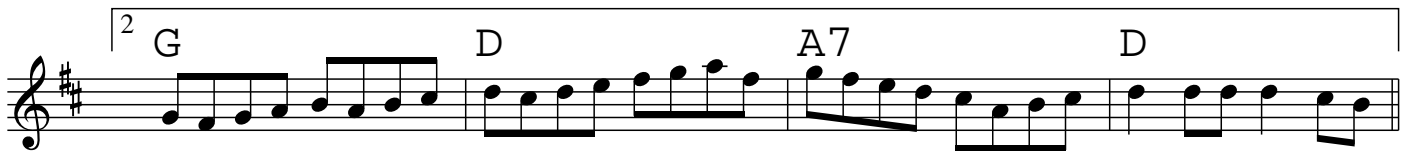
10. Beaumont Rag

$\text{♩} = 115$

A



B



Last time to change



10. Stones Rag

Lone Star

(unknown? trad.)

$\text{♩} = 115$

A C F

G C 1 2

B A7 D7

1 G C

2 C A7 D7 G C

11. La Bastringue

trad.

ptA

Chords: D, A, D, A, D, D, A, D, G, A7, D, A7, D

ptB

Chords: D, C, D, G, D, C, A7, A7, D, A7, D

Detailed description: The score for 'La Bastringue' is in 2/4 time with a key signature of one sharp (F#). It consists of two parts, ptA and ptB. Part A has two staves. The first staff contains a repeat sign followed by a sequence of eighth notes: D4, E4, F#4, G4, A4, B4, A4, G4, F#4, E4, D4. The second staff continues with D4, E4, F#4, G4, A4, B4, A4, G4, F#4, E4, D4, then a measure with G4, A4, B4, A4, G4, F#4, E4, D4, followed by a first ending (A7, D) and a second ending (A7, D). Part B also has two staves. The first staff contains a repeat sign followed by eighth notes: D4, E4, F#4, G4, A4, B4, A4, G4, F#4, E4, D4, then a measure with D4, E4, F#4, G4, A4, B4, A4, G4, F#4, E4, D4, then a measure with D4, E4, F#4, G4, A4, B4, A4, G4, F#4, E4, D4, then a measure with G4, A4, B4, A4, G4, F#4, E4, D4. The second staff continues with D4, E4, F#4, G4, A4, B4, A4, G4, F#4, E4, D4, then a measure with D4, E4, F#4, G4, A4, B4, A4, G4, F#4, E4, D4, then a measure with D4, E4, F#4, G4, A4, B4, A4, G4, F#4, E4, D4, then a measure with D4, E4, F#4, G4, A4, B4, A4, G4, F#4, E4, D4, then a first ending (A7, D) and a second ending (A7, D).

11. L'Oiseau Bleu

Trad.

ptA

Chords: D, A7, D, A7, D, A7, D

ptB

Chords: D, Em, A7, D, A7, D, Em, A7, A7, D

Detailed description: The score for 'L'Oiseau Bleu' is in 2/4 time with a key signature of one sharp (F#). It consists of two parts, ptA and ptB. Part A has two staves. The first staff contains a repeat sign followed by eighth notes: D4, E4, F#4, G4, A4, B4, A4, G4, F#4, E4, D4. The second staff continues with D4, E4, F#4, G4, A4, B4, A4, G4, F#4, E4, D4, then a measure with D4, E4, F#4, G4, A4, B4, A4, G4, F#4, E4, D4, then a measure with D4, E4, F#4, G4, A4, B4, A4, G4, F#4, E4, D4, then a measure with D4, E4, F#4, G4, A4, B4, A4, G4, F#4, E4, D4, then a measure with D4, E4, F#4, G4, A4, B4, A4, G4, F#4, E4, D4. Part B also has two staves. The first staff contains a repeat sign followed by eighth notes: D4, E4, F#4, G4, A4, B4, A4, G4, F#4, E4, D4. The second staff continues with D4, E4, F#4, G4, A4, B4, A4, G4, F#4, E4, D4, then a measure with D4, E4, F#4, G4, A4, B4, A4, G4, F#4, E4, D4, then a measure with D4, E4, F#4, G4, A4, B4, A4, G4, F#4, E4, D4, then a measure with D4, E4, F#4, G4, A4, B4, A4, G4, F#4, E4, D4, then a measure with D4, E4, F#4, G4, A4, B4, A4, G4, F#4, E4, D4.